



Annual Review 2024

Creating impact through our people and partnerships





Credit: Photoserve

Contents

- CEO Foreword 3
- About the ERM Foundation 4
- Project locations 5
- Our impact 6
- Community volunteering 7
- Pro bono support 11
- Grant funding 16
- Future Fund program 24
- Looking ahead 30

This annual review covers fiscal year 2024 (FY24) from 1 April 2023 to 31 March 2024.
We report financial data in United States dollars, unless otherwise noted.

CEO Foreword



Tom Reichert
ERM Group CEO

I am delighted to share with you the ERM Foundation Annual Review 2024, which provides a wonderful summary of the impact our people have had across a range of fantastic organizations and causes at the intersection of climate change, nature and social sustainability.

The Foundation is an integral part of what makes ERM such a special place. We are lucky enough to have a global team of passionate people who are dedicated to making a difference on some of the most difficult sustainability challenges facing society. As well as achieving this through our work with clients, the Foundation also provides a way for our people to support causes and organizations through pro bono support, community volunteering and grant funding.

It has been an exceptional year for the Foundation, as we have significantly exceeded many of our targets, including providing access to low carbon products, services and initiatives to over 18,000 people and providing environmental education to nearly 12,000 people. As you will see from the many stories and examples in this report, the Foundation is really going above and beyond expectations, thanks to the commitment and dedication of our people and our partner organizations.

To all of our people who have participated in Foundation activities over the last year – whether that has been through taking part in grant funding, technical pro bono support or volunteering – I want to thank you for the impact you have had. I know from speaking to many of you how personally enriching these opportunities are. For those colleagues who have yet to experience working with the Foundation, get involved!

And to the organizations that we have worked with across the globe, I would like to thank you for your continued partnership and commitment to making a positive difference to today’s sustainability challenges. At ERM, one of our core beliefs is that “together we challenge.” I am honored that we are able to work together to make a positive impact on communities around the world, creating a legacy that will last long into the future.

“The impact of the Foundation is a source of great pride to myself and everyone at ERM and it is my pleasure to serve as Foundation Chair. This review captures the important contributions made by our employees, working in partnership with inspiring organizations across the world. Thank you for your passion, expertise and commitment!”



Sabine Hoefnagel
ERM, Global Leader of Sustainability and Risk,
United Kingdom

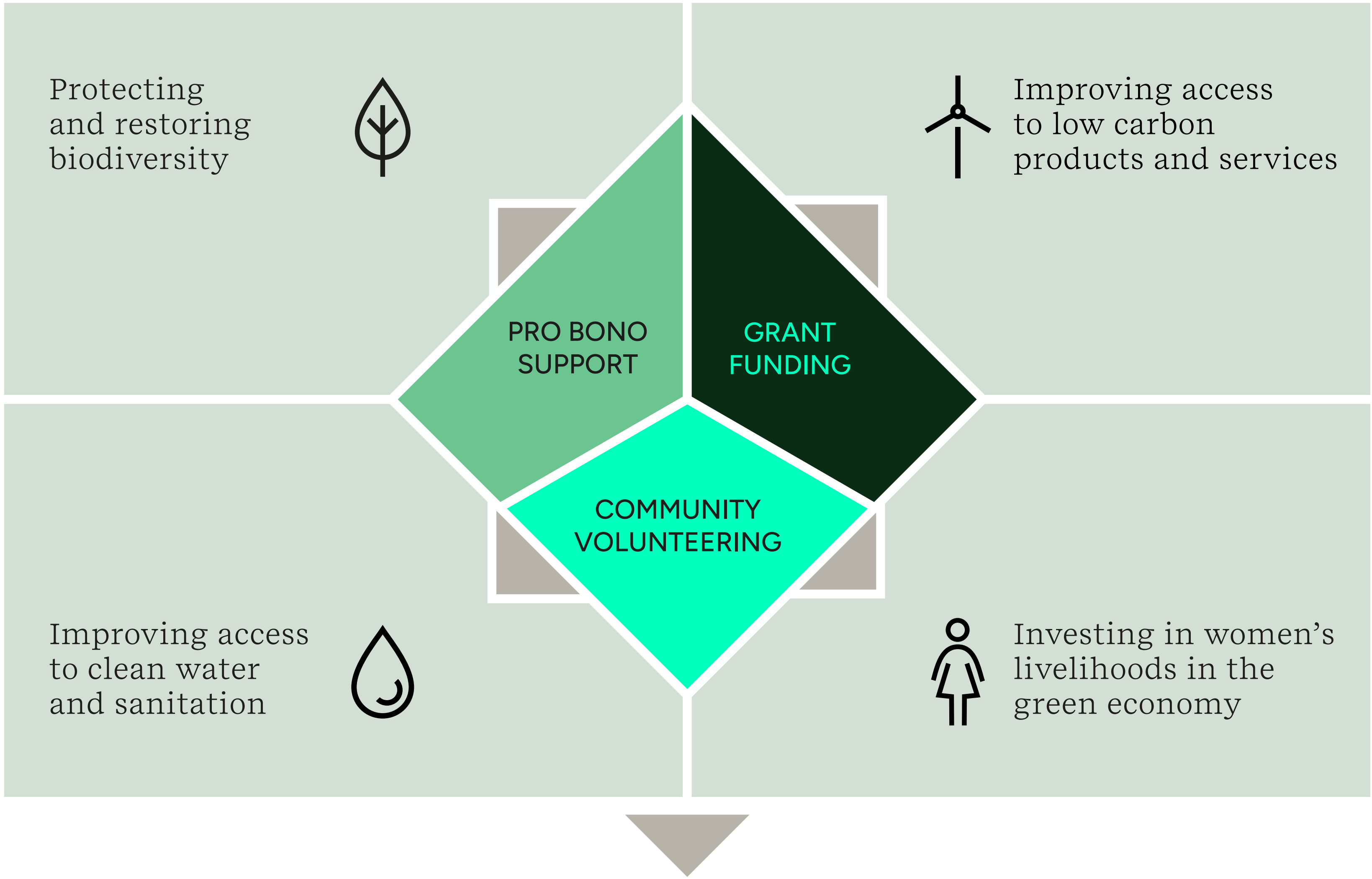
About the ERM Foundation

For nearly 30 years, the ERM Foundation has worked in partnership with nonprofit organizations and social enterprises to support the creation of a more sustainable and equitable world, delivering meaningful and lasting impact aligned to the United Nations Sustainable Development Goals.

Our focus lies at the intersection of biodiversity protection, climate action, investing in women’s livelihoods and improving access to clean water and sanitation.

The work of the Foundation is funded by ERM with additional money generated by employee donations and fundraising. We distribute funding across the world, focusing on projects and initiatives within communities or across regions where our support is most needed.

The driving force for the Foundation remains the passion of our employees, who commit their time and professional expertise through technical reviews, pro bono work, volunteering and fundraising.





Contributing to the Sustainable Development Goals (SDGs)





Project locations

This map highlights a selection of the 49 organizations, across 29 countries that we have supported in FY24 through a combination of grant funding, pro bono support and volunteering.

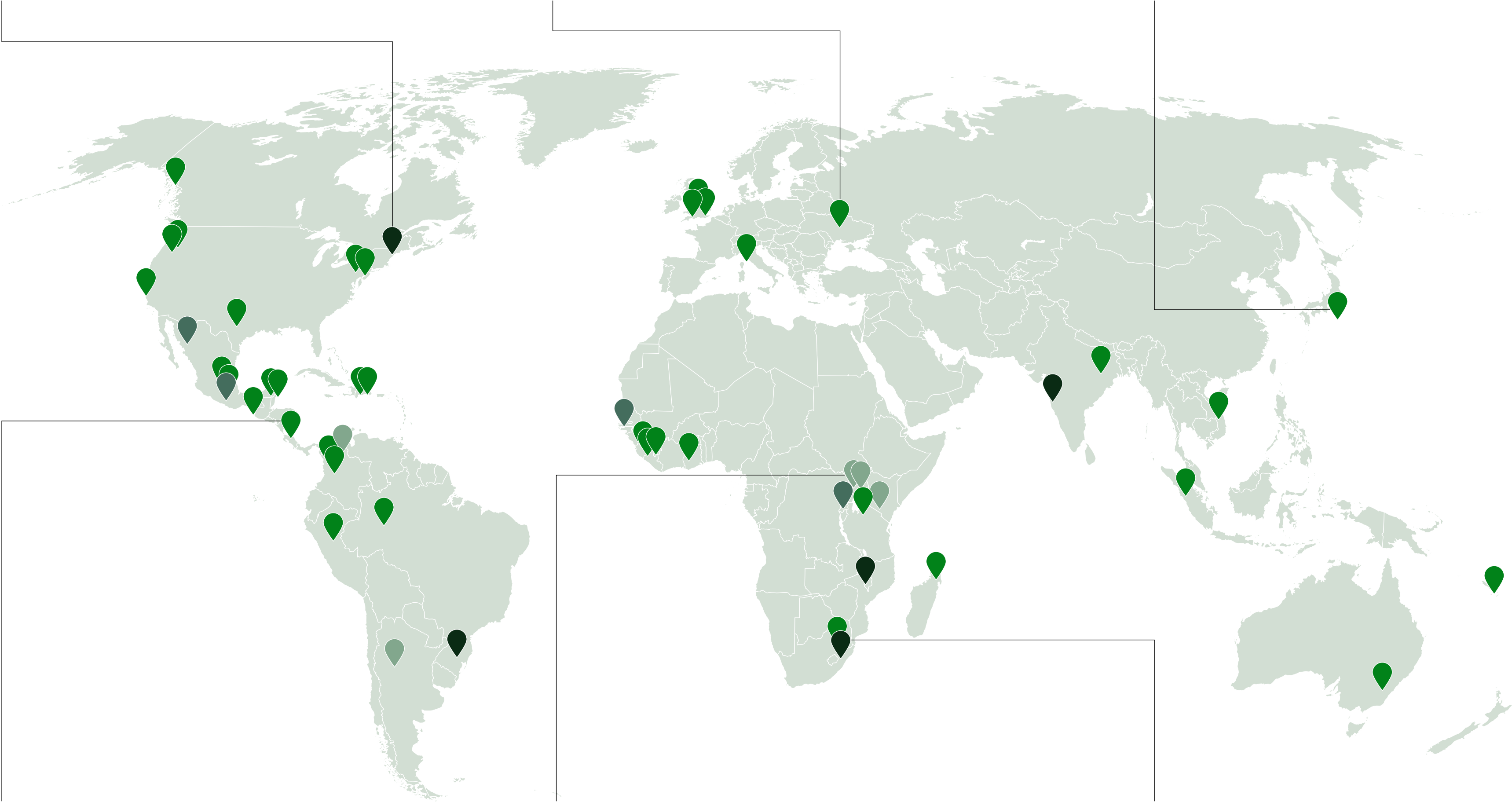
Key

-  Investing in women’s livelihoods in the green economy
-  Improving access to clean water and sanitation
-  Protecting and restoring biodiversity
-  Improving access to low carbon products and services


The Food Project
 Educating people in urban gardening to create a sustainable food system.
 Boston, USA
www.thefoodproject.org


NICOLE Foundation
 Conducting environmental assessments of contaminated land in the Kakhovka Reservoir Ukraine.
 Kakhovka, Ukraine
www.nicolefound.org

Chikyu-Ryokuka-Club
 Aiding in the restoration of Miyake Island through tree planting and protection.
 Miyake Island, Japan
www.ryokukaclub.com



Sea Turtles Forever
 Providing data management and analysis to assist in anti-poaching measures.
 Punta Pargos, Costa Rica
www.seaturtlesforever.org

Surge for Water
 Installing a well to benefit 700+ community members in Uganda.
 Kaberamaido & Kalaki, Uganda
www.surgeforwater.org

Palesa Pads
 Installing solar panels to keep their factory running during load shedding.
 Gauteng, South Africa
www.palesapads.com

Our impact

Each year, the Foundation sets targets to measure the impact of our work.

The summary of performance against our FY24 targets highlights the significant contribution the Foundation has made, in particular within the key areas of access to low carbon products and services and environmental education and training.

The Foundation's new metrics for FY25 are set out on page 30.



\$643,547

disbursed through grant funding, employee donations and professional pro bono support.

Target	FY24 Results	Status	Supported SDGs
<p>3,000</p> <p>people provided with environmental education and/or training</p>	11,706	<p>TARGET EXCEEDED</p>	
<p>7,000</p> <p>people with improved access to low carbon products, services and initiatives</p>	18,484	<p>TARGET EXCEEDED</p>	
<p>1,000</p> <p>livelihoods supported in the green economy, particularly in developing economies</p>	2,766	<p>TARGET EXCEEDED</p>	
<p>10,000</p> <p>people with improved access to clean water and sanitation, including menstrual health and hygiene education</p>	13,160	<p>TARGET EXCEEDED</p>	
<p>10,000</p> <p>hectares planted, restored, reforested or protected</p>	9,895	<p>TARGET PARTIALLY MET</p> <p>Target 99% achieved</p>	



Community volunteering



COMMUNITY VOLUNTEERING

Every year, employees from across the 42 countries in which ERM operates, participate in community volunteering.

In FY24, employees yet again donated their time to support local initiatives aligned to the ERM Foundation focus areas. Initiatives included tree planting, habitat restoration, coastal cleanups and plogging, which combines jogging with picking up litter. Thanks to all our employees who volunteered on behalf of the ERM Foundation throughout the year.



ERM employees in Shanghai regularly enjoy plogging on their lunch breaks.



ERM employees in the United States planted 110 trees in support of a public green space restoration project.



“It was a great opportunity to celebrate Earth Day, make a positive impact and enjoy time together as a team.”

Tavita Lio
Consultant, ERM, United States



Mexico City Reforestation Day

ERM employees from Mexico City took part in a volunteer day in Xochimilco to support with reforestation and habitat protection for endangered axolotls. While there, they learned about the biological, social and cultural importance of axolotls and the conservation strategies being used to protect them. The team also helped to plant ahuejotes, which are trees used to help strengthen the banks of the lake.



Credit: ERM

Chikyu-Ryokuka-Club

www.ryokukaclub.com

Chikyu Ryokuka Club is working towards the restoration of Miyake’s forest, which was damaged after a volcanic eruption in 2000. ERM employees from across Japan went to Miyake Island to provide maintenance on trees planted by ERM in 2022. While there, they also collected more than 2,000 liters of plastic beach waste.



Credit: ERM

ERM employees in Singapore took part in a coastal cleanup.



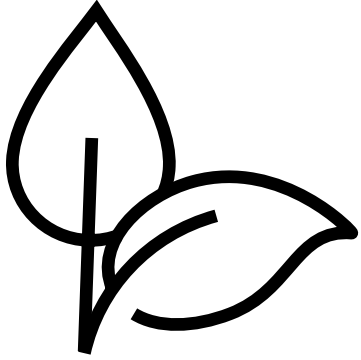
“It was so rewarding for us, including our family members, to take part in the International Coastal Cleanup Day at Changi Beach. We collected a total of 92 kilograms of trash and even got a chance to appreciate our local intertidal biodiversity!”

Ester Lee
Consultant, ERM, Singapore

COMMUNITY VOLUNTEERING

“For three decades, the ERM Foundation has brought together impact-focused employee volunteers and purpose-driven partner organizations to make sustainable, life altering change in our local communities and around the world.”

ERM Foundation US Board of Directors



With the help of ERM employees, we supported the planting of

35,830

trees and saplings across 13 countries



Credit: ERM

IndigiGrow
www.indigigrow.com.au

IndigiGrow is a social enterprise that sustains people, land and culture through propagating and growing native plants. ERM employees in Australia held a community day to aid the restoration of biodiversity through the planting of 450 Lemon Myrtles, an Australian native plant that has been used by Indigenous Australians, both medicinally and in food, for 40,000 years.



Pro bono support



PRO BONO SUPPORT

Accessing professional expertise is critical to the work of nonprofits and social enterprises.

The Foundation’s program of pro bono work offers our employees the unique and rewarding opportunity to utilize their technical skills and knowledge to support inspiring projects in often challenging conditions.

Pro bono work not only contributes to making a tangible contribution to communities, it also supports training and skills development in partner organizations and the longer-term benefits that this generates.

“What makes the ERM Foundation so unique is that we are able to combine grant funding with employees’ time and relevant skills to make a measurable difference to society and the environment.”

ERM Foundation UK Board of Trustees

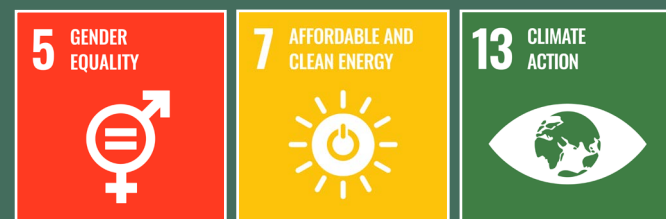
Solar Village Project

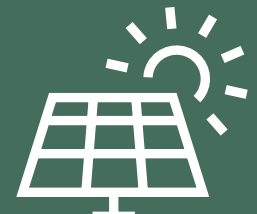
www.solarvillageproject.org/

Solar Village Project (SVP) works with India’s most vulnerable populations to alleviate energy poverty. Through pro bono support, ERM experts worked with SVP to develop a new governance framework, key performance indicators and a robust reporting process. In addition, our grant funded access to reliable solar power for 250 students across five rural schools in India. This combined work helped SVP to increase operational efficiency; measure, quantify and effectively communicate project impacts; increase student attendance rates; and reduce carbon emissions.

“The support and expertise provided by the ERM Foundation has been pivotal in advancing our projects. Their dedication, knowledge and willingness to engage deeply with our projects have added significant value, making them indispensable partners in our journey.”

Joe Kselman
Solar Village Project



 **250**
students with access to reliable solar power



Credit: Solar Village Project

PRO BONO SUPPORT

ArgenINTA

www.argeninta.org.ar

The ERM Foundation has been proudly supporting ArgenINTA since 2019. This year, ERM employees in Argentina provided technical expertise to optimize the efficiency of the solar pumping systems and support groundwater data management to identify potential new areas for a water supply. An ERM Foundation grant helped with the improvement of the water distribution network and the installation of solar pumping systems in two remote communities in Northern Argentina, helping to provide reliable, clean water for 30 families.



150 people with improved access to clean, reliable water



World Salmon Council

www.worldsalmoncouncil.org

World Salmon Council (WSC) provides student education and community engagement on the environmental importance of wild salmon conservation in watershed management, to connect students and adults with nature. The ERM Foundation has partnered with WSC since 2017, funding field-learning experiences on the importance of salmon in ecosystem health for middle and high school students from underserved populations. In addition, a dedicated team of 10 ERM employees shared their expertise throughout the school year to teach field activities that improve understanding of biodiversity and ecosystems and provide mentorship and career role-modeling for students.

“It is very rewarding seeing kids’ faces light up when they get out in nature for possibly the first time.”

Justin Dauphinais
Consultant, ERM, United States



1,560 students with improved understanding of biodiversity and watersheds



Credit: ADSEI

ADSEI

www.adseicolombia.com

ADSEI works to promote industrial ecology and the sustainability of Colombian community development projects. The ERM Foundation is supporting a sustainable economic development initiative to create resilient livelihood alternatives for two ecotourism-dependent communities impacted by the global pandemic and increasing climate change-related events. A team of ERM experts in Colombia is conducting a socio-environmental study of the region, working with community residents and project stakeholders to identify and assess the feasibility of potential conservation projects and their associated livelihoods. The goal is to improve communities' livelihoods by identifying synergies with ecotourism-related activities.

65 

community members involved



Credit: Agua Clara

Agua Clara

www.aguaclara-por-bacalar.org

Agua Clara is committed to implementing actions that respect the environment and protect the Bacalar Lagoon in Quintana Roo, Mexico. Grant funding and pro bono expertise are strengthening water quality monitoring systems along the 60 kilometer length of the lagoon and generating a robust database to enhance understanding of the environmental impacts on the sensitive ecosystem. To effectively communicate this information to key stakeholders and the public, an ERM team created a digital dashboard visualization tool and reporting platform.

 20

people trained in taking and testing of water

 17

parameters analyzed in water

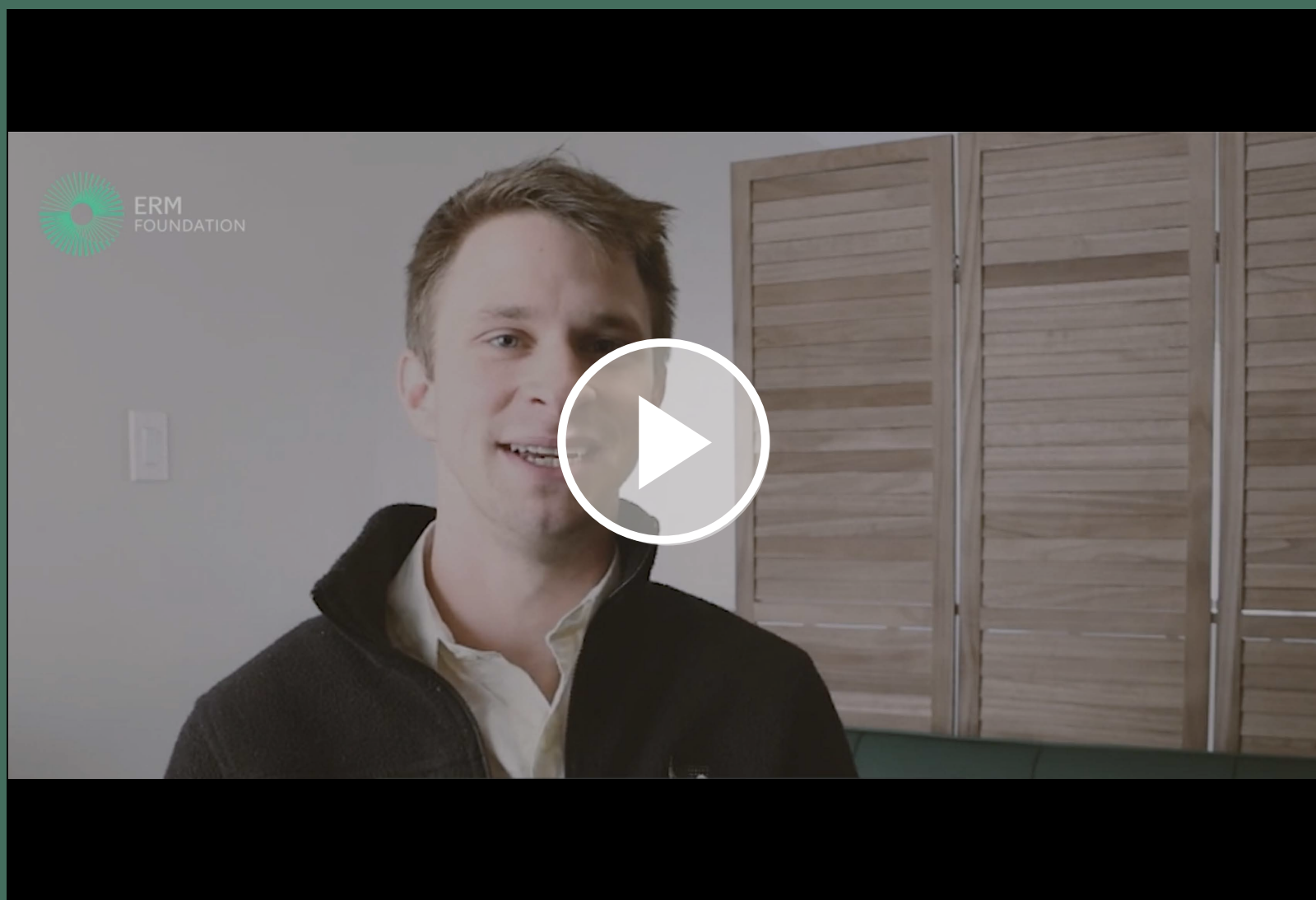


PRO BONO SUPPORT



Credit: Patrick Ross

Silky Sifaka lemur. Global population is estimated at 200 – 2,000 individuals.



74  cameras installed

850  hectares of rainforest monitored

3  Reports published

Lemur Conservation Foundation

www.lemurreserve.org

The ERM Foundation provided professional pro bono time to support The Lemur Conservation Foundation (LCF) establish a research project site to better understand the occupancy of the critically endangered Silky Sifaka Lemur. ERM employee Patrick Ross, who had previously led similar projects across Madagascar, provided technical expertise to lead a collaborative effort in Northeastern Madagascar to install 74 motion activated cameras in both canopy and terrestrial locations spread across 850 hectares of protected rainforest. Alongside this, LCF and ERM conducted multiple training sessions with students, guides, and professional climbers in order to build local capacity for many other conservation research projects.

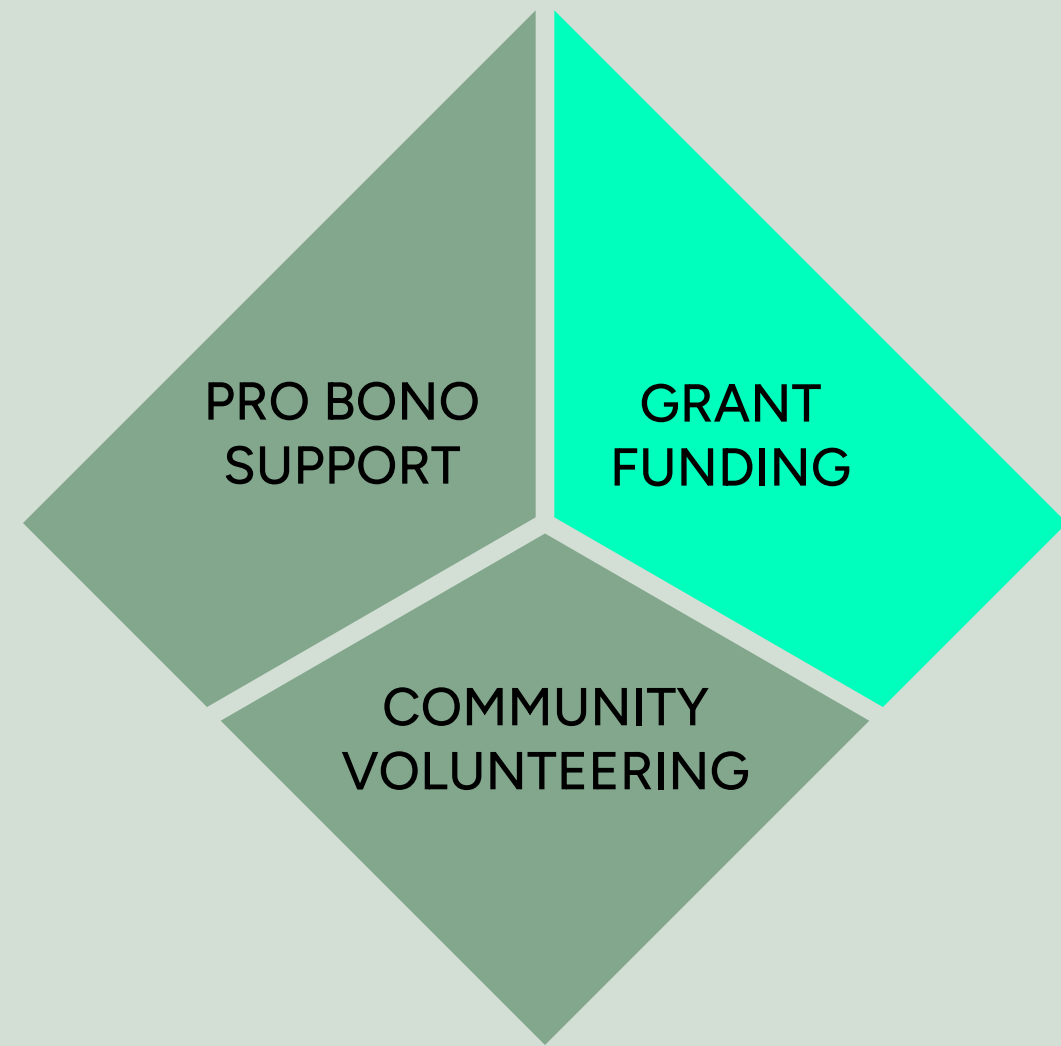
“This project helped to make my dream come true of continuing endangered species research. This was the sixth time that I’ve been able to lead this type of work, and it was a real treat to do it in collaboration with the ERM Foundation.”

Patrick Ross
Consultant, ERM, United States

“Thanks to Patrick and the LCF team’s efforts, invaluable data on Silky Sifaka Lemur population and habitat usage will drive real-world conservation efforts to ensure these iconic creatures have a fighting chance at survival for generations to come.”

Dr. Erik Patel
Conservation and Research Director,
The Lemur Conservation Foundation





Grant funding



GRANT FUNDING

One of the main mechanisms by which the ERM Foundation supports organizations is through the grant funding program.

ERM employees identify nonprofits and social enterprises and work with these organizations to collaborate on initiatives and programs that the Foundation can support with funding.

Grant funds are provided for both one-off initiatives and for programs that run for multiple years, maximizing the impact to communities and habitats.


\$270,216
in grants distributed to
39 organizations



Credit: Drink Local Drink Tap

Drink Local Drink Tap

www.drinklocaldrinktap.org

The ERM Foundation has been partnering with Drink Local Drink Tap (DLDT) since 2019 in its mission to improve global water equity awareness through education and clean water and sanitation projects. This past year, Foundation funding helped to construct gender-specific bathroom blocks and wash stations at two Ugandan primary schools, benefitting 1,050 students and teachers. In addition, an ERM team in the United States actively supports DLDT with local awareness and fundraising initiatives and leadership advisory guidance.

“Increased privacy and safety at school improves dignity and contributes to student health and safety, self-esteem and fosters a conducive environment for education.”

Erin Huber
Executive Director, Drink Local Drink Tap

 **3** GOOD HEALTH AND WELL-BEING
 **5** GENDER EQUALITY
 **6** CLEAN WATER AND SANITATION

 **1,050**
students and teachers with improved sanitation facilities



Credit: The Litterboom Project

The Litterboom Project

www.thelitterboomproject.com

The Litterboom Project is a new initiative in South Africa that aims to prevent plastic pollution in the oceans by tackling the problem earlier in the river systems. This year, we helped The Litterboom Project to identify “waste-prenuers”: individuals who will be key players in diverting plastics into sellable products. By supporting waste-prenuers, there is a direct incentive for households to not discard plastic due to its inherent value as a raw material for locally made products. With the ERM Foundation’s support, two waste-prenuers have been trained and three prototype products have been made.

“Without education, and therefore without the support of youth, we cannot begin to inform the next generation of what they can do to leave the planet better than we, as the user generation, have done.”

Cameron Service
CEO, The Litterboom Project



2 waste-prenuers trained

Sumatran Orangutan Society

www.orangutans-sos.org

This year, the Foundation continued our partnership with the Sumatran Orangutan Society, which we have been working with for four years. The latest funding has been directed to support a feasibility study to assess the potential to retrofit smallholder oil palm plantations to integrate nature and generate more sustainable incomes for smallholder farmers.



1 feasibility assessment completed



Credit: Zac Mills/SOS

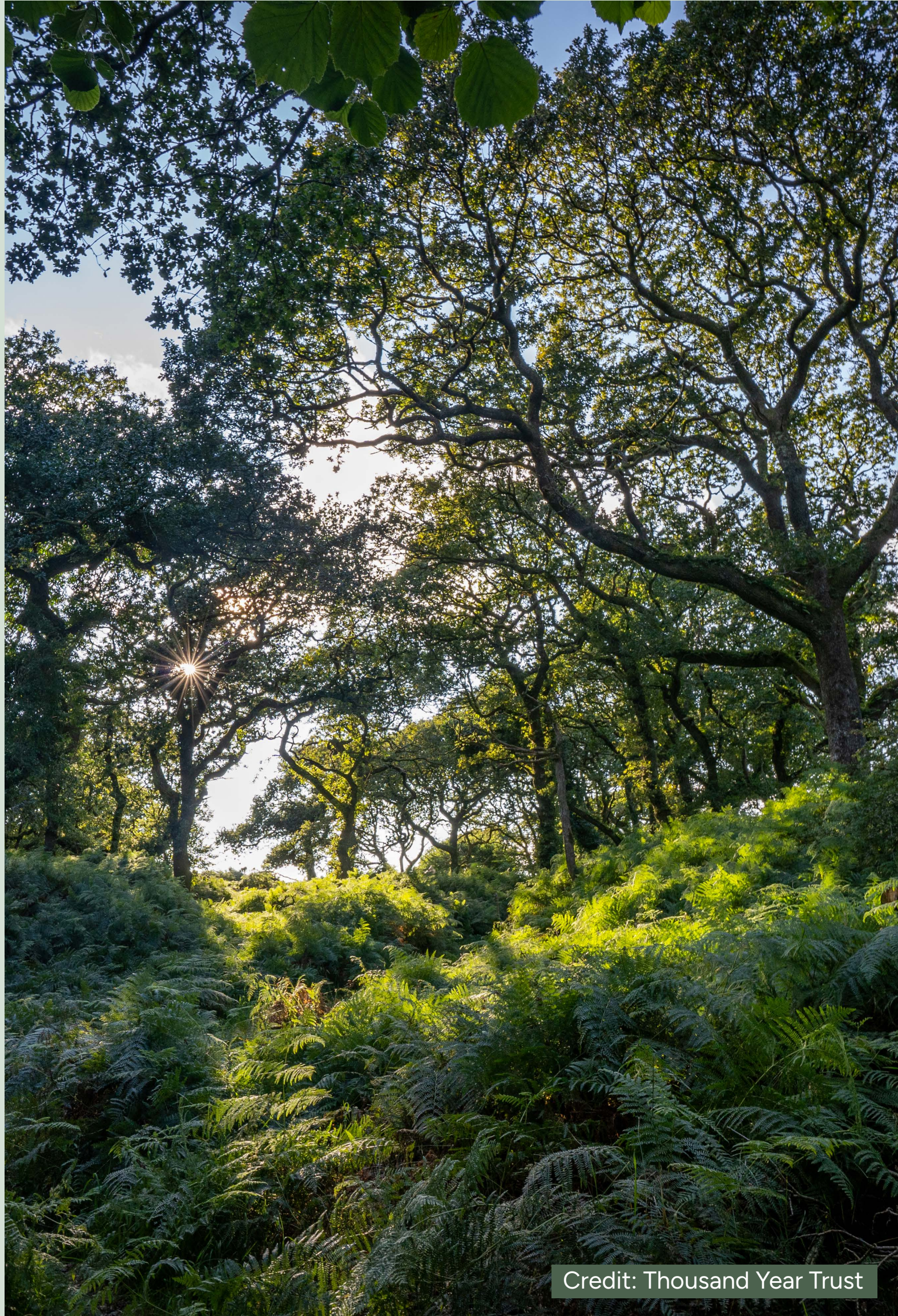
GRANT FUNDING



Projet Primates

www.projetprimates.com

Grant funding from the ERM Foundation has contributed to the restoration of 2,000 trees in degraded areas of Guinea. The funding has also enabled 130 children to receive environmental education as part of Projet Primate’s project to save Haut Niger National Park through partnerships with local communities to increase awareness and engagement around environmental issues.



Thousand Year Trust

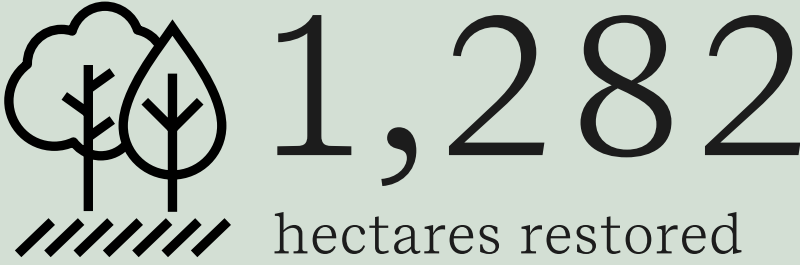
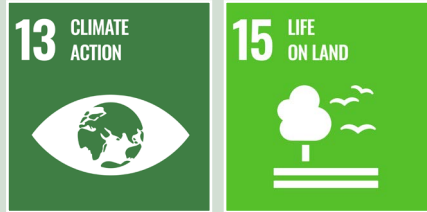
www.thousandyeartrust.org

The Thousand Year Trust’s mission is to catalyze the tripling of rainforests growing in the United Kingdom over the next 30 years to one million acres. In order to successfully carry out rainforest restoration across 12,000 acres in this area, the Thousand Year Trust is partnering with over 30 farmers and landowners and submitting a bid to the UK government. With funding from the ERM Foundation, a landscape scale recovery program will bring together third parties to create the bid and develop full interactive, explanatory mapping and geospatial materials for the ecosystem restoration.

“Funding to deliver this project is a key challenge for the charity. The ERM Foundation support will enable this project to proceed and for the delivery phase to be initiated.”

Merlin Hanbury-Tenison

Thousand Year Trust





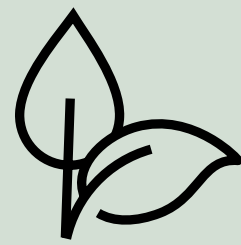
Credit: Swadhina

Swadhina
www.swadhina.org.in

Swadhina works in remote villages in the states of Jharkhand, Bihar and West Bengal to improve the lives and living conditions of women and children. This year, the ERM Foundation helped to fund Swadhina’s “Future for Us” project, which aims to build awareness and action among children and young adults on environmental protection. With ERM’s support, Swadhina created five ecology clubs, each comprising 40 members, with the aim of involving young people between the ages of 13 and 25 in actions and activities relating to the protection of ecology and their local environment. Due to these clubs, action-based initiatives like tree planting and village cleaning drives have taken place in local villages.

“The funds and the support provided by the ERM Foundation and ERM employees help us reach out to the women and children of remote villages with the messages of health, education and sustainable livelihood. We are giving them a vision of a brighter, cleaner and greener future. Thank you, ERM Foundation!”

The Swadhina team

 **1,850** trees planted



Credit: Project Zawadi

Project Zawadi
www.projectzawadi.org

Project Zawadi works to ensure Tanzanian children have access to quality education. The ERM Foundation supported Project Zawadi’s Model Farm project this year. The Model Farm program provides Conservation Agriculture education to students across four schools in the local village. With ERM Foundation funding, the program increased the number of students fed a nutritious meal and improved the soil biodiversity in the school farm utilizing vetiver technology. In addition, this funding enabled Project Zawadi to recruit 40 new community farmers into their education program.



 **79** hectares restored



Credit: Tēnaka 2024

Tēnaka

www.tenaka.org

Tēnaka builds regenerative programs to restore marine ecosystems across Asia. With funding from the ERM Foundation, Tēnaka was able to expand beyond Southeast Asia and the Indian Ocean to open a new site in New Caledonia. This site is home to the second largest barrier reef in the world. While there, Tēnaka planted 2,600 new mangroves to help restore local biodiversity.



2,600 
mangrove trees planted



Credit: Rios Tarango

Rios Tarango

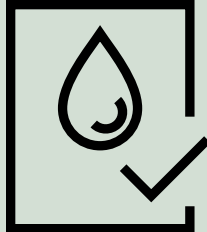
www.rios-tarango.org

Rios Tarango is building an artificial wetland to aid the sanitation of the Puerta Grande river. This wetland cleans the water, captures carbon dioxide and generates sufficient biomass to be used as compost. The ERM Foundation has assisted Rios Tarango with ongoing technical advice for the rehabilitation and design of the wetland. ERM employees in Mexico have trained staff from Rios Tarango on how to operate the portable water laboratory so they can monitor water quality independently. Grant funding meant Rios Tarango was able to generate a water baseline for the wetland and corresponding reservoir.



“Collaborating with ERM experts through the ERM Foundation will enrich our water monitoring strategy and will help us to understand the results obtained in order to evaluate the performance of each project and improve them.”

Rios Tarango Team

 1 water baseline assessment completed



Credit: Joaquin Cotton, Rocking the Boat

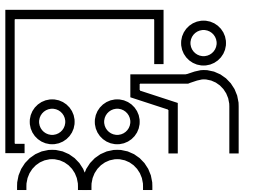
Rocking the Boat

www.rockingtheboat.org

The ERM Foundation strengthened our long-term partnership with Rocking the Boat (RTB) this year, funding an air quality and data analysis educational project engaging 48 Bronx teens and impacting the health of the Bronx River in New York City.

“Every individual is proud of what they do and empowered in their roles at RTB, and I always walk away from any discussion feeling lucky to be involved with this organization through the ERM Foundation.”

Rayna Stern
Associate Partner, ERM, United States

48 
young people engaged in environmental education

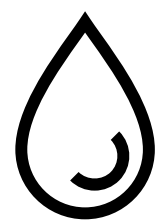


Anno's Arts

www.annosarts.org

The mission of Anno's Arts is to improve the wellbeing and education of children and young adults in Kenya through the arts and academia. With an ERM Foundation grant, Anno's Arts was able to install a 10,000 litre water tank that makes clean water directly accessible to the children who use the centre. As a result, children were given access to clean, safe water and educated on how to ensure water is safe for cooking, cleaning and drinking.



 50 children with improved access to drinking water

GRANT FUNDING

Africa Development Promise

www.africadevelopmentpromise.org

The ERM Foundation has supported Africa Development Promise (ADP) since 2014 as a founding funder and has supported its sewing and business management program since 2022. This year, funding from the ERM Foundation enabled 20 women to participate in five-month programs in certified tailoring and micro business development based on the award-winning Street Business School curriculum.

The story of Catherine Nyubunnya, a 21-year-old resident of Ndazabazadde, a village in the Wakiso District of Uganda, exemplifies the impact created.

When Catherine was in her senior year of secondary school, she took an introductory sewing class and was encouraged by her teacher to pursue advanced training in tailoring.

However, sewing programs at vocational institutions were too expensive so Catherine worked as a store clerk at a tailoring business where she paid close attention and picked up many skills. She then learned of the certified tailoring program with ADP.

Over the next five months, Catherine learned pattern design and garment construction of dresses, bags, shorts and shirts, and she soon began getting requests from neighbors, who loved the outfits she made for herself. She is now saving to purchase her own sewing machine.

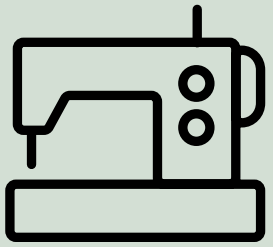
Catherine is enrolled in ADP’s micro-business development program to enhance her business and financial skills. She is planning to open a tailoring business.



Credit: Amanda Kaywaisolya

“Our partnership with the ERM Foundation has been characterized by a highly positive and supportive relationship that extends beyond financial contributions.”

Monica LaBiche Brown,
Founder & Executive Director,
Africa Development Promise



Sewing and business management program

20

women supported

10

month program duration





Future Fund program



Credit: SolarAid/Haley Withers

About the Future Fund

At the start of the fiscal year, ERM launched the Future Fund program, which has been made possible thanks to the generous donations of ERM shareholders.

This program is the first of its kind for the Foundation, enabling us to accelerate and scale progress towards the SDGs by investing in longer-term partnerships with organizations whose programs sit at the intersection of biodiversity protection, climate action and sustainable livelihoods.

The Future Fund supports one project per ERM region, each with a dedicated project team to support the initiative. These projects were chosen with the help of ERM employees globally.

The next pages provide more information about each organization and its achievements during the first year of the program.

\$200,000

disbursed in year one of a three-year program

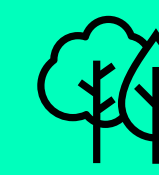
ERM Foundation Future Fund



Climate action



Sustainable livelihoods

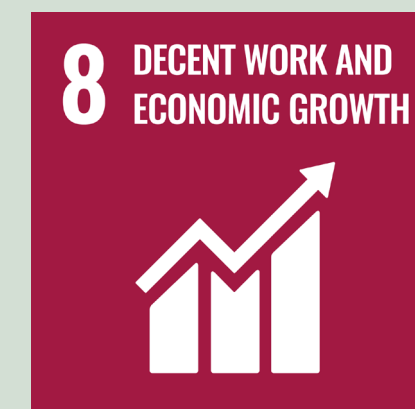


Biodiversity protection

Our partners:



Contributing to the following SDGs:



SolarAid

www.solar-aid.org



EUROPE, THE MIDDLE EAST AND AFRICA

Millions of people in sub-Saharan Africa rely on expensive, toxic and dangerous lighting sources, such as candles and kerosene lamps. SolarAid’s mission is to light up every home, school and clinic in Africa by 2030 using clean, safe solar power. It does so by innovative programs to reach the poorest communities with clean, safe light and by supporting entrepreneurs to run their own solar businesses which accelerates access to clean energy.

The ERM Foundation is supporting SolarAid’s Mayi Walas (women solar entrepreneurs) program in rural Malawi, to help establish and support 60 new groups over the next three years. These women will be upskilled and provided with the resources needed to start and maintain successful solar energy businesses, helping to accelerate clean energy access. ERM employees are assisting SolarAid with project management and have raised awareness of this project throughout the ERM region.

During its first year as part of the Future Fund program, SolarAid has recruited, trained and provided loans to 60 Mayi Walas groups. In the next phase of the Future Fund, SolarAid plans to further leverage this support by providing ongoing training and helping the women become members of FEBCO (a savings and credit cooperative established by SolarAid) to access larger loans and long-term business support. By the end of year three, SolarAid will have supported 1,320 women to become self-sufficient entrepreneurs and provided up to 70,000 people with access to clean, safe and affordable solar light.

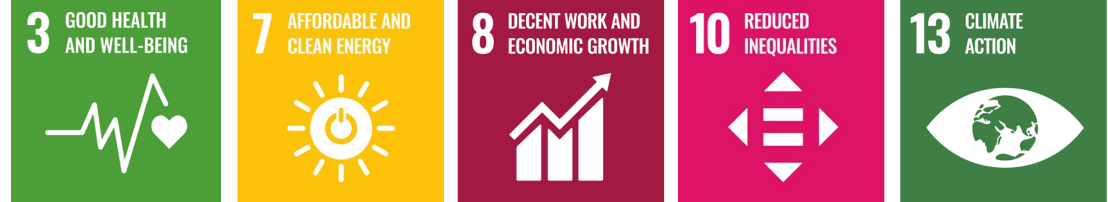
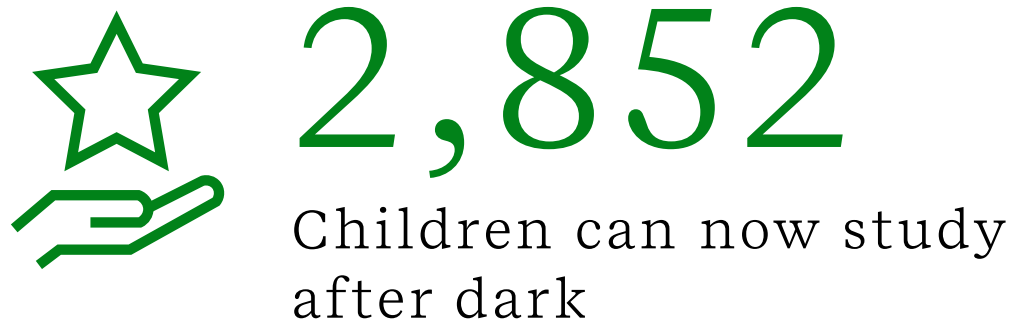
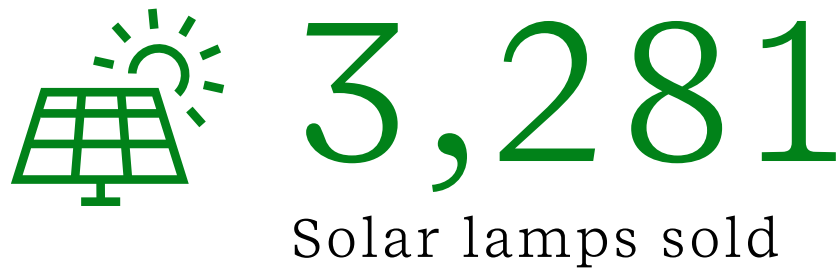
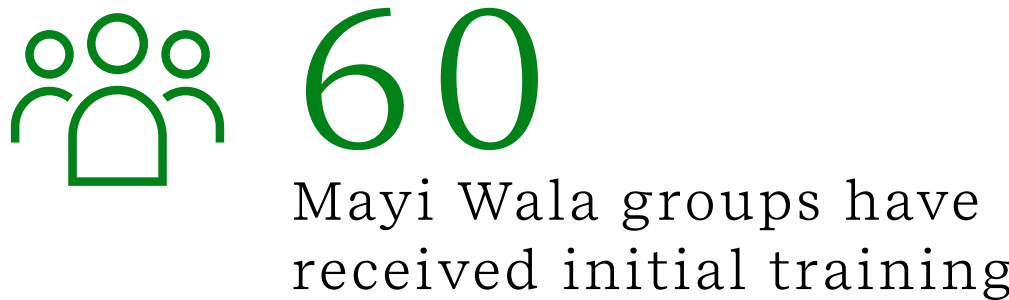


Credit: SolarAid/Chris Gagnon

“The 1,320 individuals who make up the Mayi Walas groups have blossomed into accomplished entrepreneurs, all thanks to the empowering initiatives of the ERM Foundation.”

SolarAid

Year one figures



The Ocean Foundation

www.oceanfdn.org



LATIN AMERICA & CARIBBEAN

Increasing greenhouse gas emissions threaten coastal and marine ecosystems through changes in the ocean temperature and melting ice caps. Coastal ecosystems require a holistic protection strategy that considers each habitat type, the species reliant on the ecosystems and the human-induced stressors on the environment. The Ocean Foundation’s (TOF’s) mission is to support, strengthen, and promote organizations dedicated to reversing the trend of destruction of ocean environments around the world. It focuses its expertise on emerging threats to generate cutting-edge solutions.

The ERM Foundation is supporting a project centered on community-led capacity building to ensure the protection and restoration of 400 acres of mangroves in the Xcalak Reefs National Park in Mexico, which forms part of the second largest coral reef in the world. TOF’s goal is to expand mangrove wetlands by restoring patterns of water flow to promote rapid colonization of mangroves and native plants. ERM employees are providing TOF with project management and local project coordination, including permitting support and wetland expertise.

During the first year of the project, TOF completed a feasibility assessment and restoration plan. The organization presented the findings on its blue carbon* baseline assessment to the local community and provided community-wide training in restoration and monitoring techniques. During the next phase, TOF plans to complete large-scale hydrological restoration activities, such as channel dredging, vegetation removal, culvert cleaning, and create seedling and sapling dispersion centers.

*Blue carbon: The carbon captured by the world’s marine systems



Credit: The Ocean Foundation



Credit: The Ocean Foundation

This project is a partnership of The Ocean Foundation with Xcalak Reefs National Park (CONANP), CINVESTAV, ENES-UNAM, PMC (Programa Mexicano de Carbono) and FMO (Fundación Mexicana para el Océano) and habitat restoration experts at Xcalak Reefs National Park.

“This project engages Xcalak community members as citizen scientists in nature-based solutions while diversifying their livelihood options. With the help of the ERM Foundation, we have trained residents and formed brigades, made up of mostly women, for mangrove restoration.”

The Ocean Foundation

Year one figures

50+ Community members trained in mangrove restoration

3 Community workshops held

1 Blue carbon baseline assessment completed

Ocean Wise Conservation Association
www.ocean.org



Ocean Wise’s mission is to empower communities and individuals to take action to protect and restore our world’s oceans. The ERM Foundation is supporting Ocean Wise’s seaforestation project, which provides nature-based solutions to climate change and biodiversity loss.

In 2023-24, Ocean Wise worked on a kelp planting project with Tsleil-Waututh Nation, in its traditional waters of Burrard Inlet, Canada. Informed by this work, Ocean Wise researches and develops cost-effective and scalable kelp regeneration techniques to support ecosystem restoration efforts with Indigenous Peoples and coastal communities around the world. By combining scientific and Indigenous knowledge to engage communities in project design and in-water activities, Ocean Wise and its First Nations partners will identify restoration sites, monitor the health of plantings, and plan and implement appropriate solutions.

An ERM team of subject matter experts is providing Ocean Wise with expertise, guidance and research on scientific technical questions that will help address the ongoing sustainability of the program as well as identify sustainable revenue streams for seaforestation.

During the first year of the program, Ocean Wise established the viability of two pilot test sites, planted the first generation of kelp at two restoration sites and developed a fully functioning kelp nursery. Ocean Wise will continue to trial, monitor and evaluate planting and seeding techniques for successful kelp regeneration to bolster ecosystems and benefit local communities.



Credit: Tsleil-Waututh Nation



Credit: Tsleil-Waututh Nation

“ERM experts are researching and offering advice to questions facing Ocean Wise that will help us address the ongoing sustainability of the seaforestation program.”

Ocean Wise

Year one figures



Center for Rural Development in Central Vietnam

www.crdvietnam.org



ASIA-PACIFIC

The Center for Rural Development in Central Vietnam (CRD) is a nonprofit organization whose goal is to build capacity and develop sustainable livelihoods associated with natural resource conservation. CRD does this through research, training, technological transfer and advocating for sustainable rural development policies.

The ERM Foundation is supporting CRD with the conservation of medicinal plants and the improvement of livelihoods for ethnic minorities in the mountainous areas of A Luoi district in Vietnam. The district has a large area of natural forest containing at least 27 rare and valuable medicinal plants that are on the verge of extinction. The decline in medicinal resources has had an impact on community health, biodiversity, indigenous knowledge and people’s livelihoods. The ERM Foundation is working with CRD to address the root causes behind the decline of plant resources. The project aims at protecting and restoring the biodiversity of the forest through education on forest management. With the focus on upskilling the local communities, with a specific focus on women, this project aims to provide greater economic independence to address gender stereotypes in ethnic minority communities.

During the first year of the project, CRD is involving five forest management communities that will actively contribute to the management and conservation of natural medicinal plant resources. This will lead to up to 400 people being upskilled in biodiversity conservation, sustainable development and business development. Throughout the remainder of the project, CRD aims to increase the number of local communities involved, leading to 5,000 hectares of natural forest being better managed and protected by the community.



Credit: CRD



Credit: CRD

“The ERM Foundation’s aid is critical to the local community, contributing significantly not only to increased livelihoods for indigenous people but also to the area’s biodiversity restoration and preservation.”

Lan Anh
CRD

Year one figures



People with increased awareness of biodiversity conservation and climate change



People actively engaged in forest management and the conservation of medicinal plant resources



Medicinal plants planted



Looking ahead

For the year ahead, we have set three ambitious targets aligned to the ERM Foundation focus areas.

Our FY25 Targets



10,000

people engaged through low carbon initiatives



10,000

hectares of habitats protected or restored



10,000

livelihoods improved

As the ERM Foundation nears its' 30th anniversary, we are reflecting on the ever-increasing challenges faced in protecting both our planet and its people. Over the next year, we will be engaging with stakeholders to review and evolve our focus and priorities which will define the future delivery of our work. Support is provided for both established and pilot projects, where we can best leverage our technical expertise in combination with grant funding.





ERM
FOUNDATION

The ERM Foundation

The ERM Foundation is a registered charity in the United Kingdom (1113415).

The ERM Group Foundation, Inc. is a registered 501(c)(3) nonprofit organization in the United States (tax I.D. 23-2792333).

ERM Foundation Limited is a registered charity in Australia (113 079 708).

ERM Foundation Central Europe e.V is a registered charity in Germany (registration no: VR 5299).

Front cover image credit: ERM

